



Altair

HyperWorks

Altair HVVH Tutorials 2019

HVVH-1000: Working with Session Files

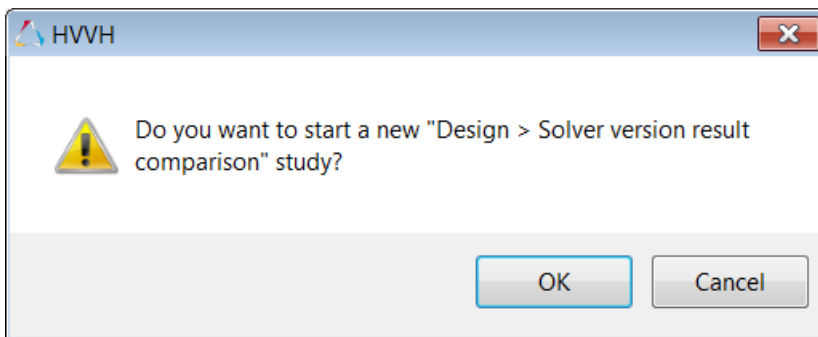
altairhyperworks.com

In this tutorial, you will learn how to:

- Start a new session.
- Load an existing session file.
- Save and append session files.
- Exit a session.

Step 1: Start a New HVVH session.

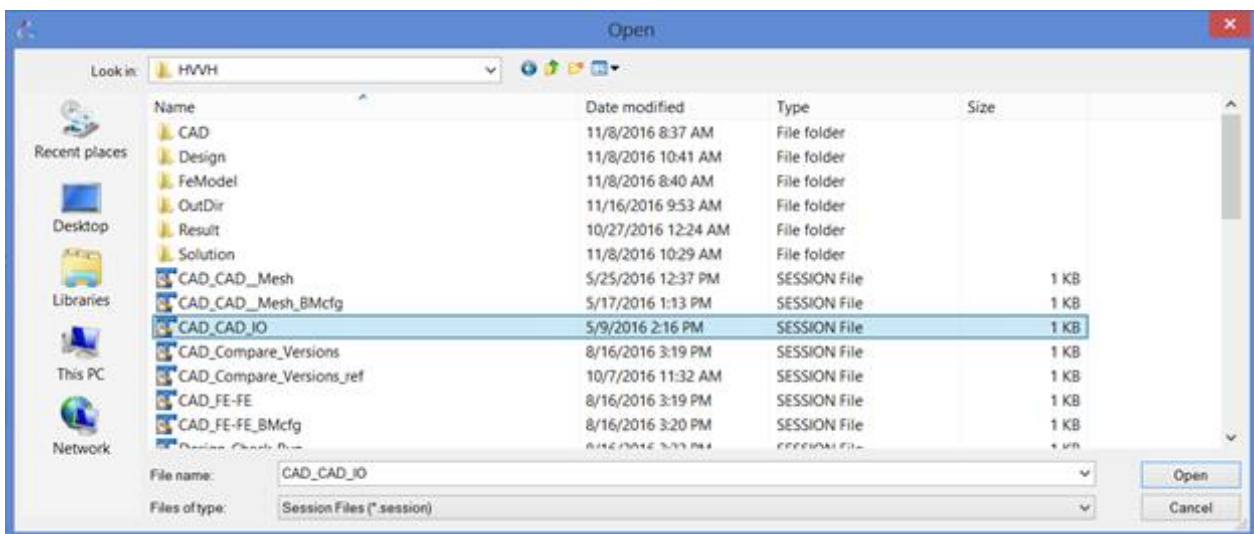
1. From the HVVH dialog's menu bar, click **File > New**.
2. HVVH displays the following message:



3. To start a new session, click **OK**. To continue with the current session, click **Cancel**.

Step 2: Load an existing session.

1. From the menu bar, click **File > Load Session**.
2. Use the **Open** dialog to locate and load your session file.
All GUI entries needed as Input are loaded.
3. Each individual option has a session file. The loaded session file takes you to the respective options. For example, the session selected in the dialog below take you to the CAD > CAD IO tab.



Step 3: Save a new session.

1. Load an existing session file or manually enter all input fields on a given tab.
2. From the menu bar, click **File > Save New Session**.

The **Save Session File** dialog is displayed.

3. Save the required session file.

All GUI entries needed as input are saved in the session file.

Each individual tab has a session file. When loaded again, the saved session file takes you to the respective tab.

Below is an example of the session file, `FEBASICIO.session`.

```
MainTab : {FE Model}
SubTab : {Basic IO}
Number : 1
Begin : 1
    {Solver Type} : {OptiStruct}
    {HW Version} : {2017}
    {Model Checker} : 0
    {Export Profile} : {}
    {Input Files} : { C:\hvvh\FEModel\BasicIO\car1.fem}
    {Output Directory} : {C:\HVVH\OutDir}
End : 1
```

To use this session file in batch mode:

```
..\utility\hvvh\launch.bat -b FEBASICIO.session
```

Step 4: Append a session.

1. Manually enter all input fields for a given tab. This can be appended to the existing session file.

It will be shown in different blocks.

2. From the menu bar, click **File > Append Session**.
3. Select a session from the dialog.

This appends the required entries to an existing session file; all GUI entries needed as input are appended in the existing session file.

Each new set of entries are stored in different blocks.

This can be used in [batch mode](#) to execute multiple sessions.

```
MainTab : {FE Model}
SubTab : {Basic IO}
Number : 1
```

Begin : 1

```
{ Solver Type } : {OptiStruct}
{ HW Version } : {2017}
{ Model Checker } : 0
{ Export Profile } : {}
{ Input Files } : {C:\hvvh\FEModel\BasicIO\car1.fem}
{ Output Directory } : {C:\HVVH\OutDir}
```

End : 1

Begin : 2

```
{ Solver Type } : {OptiStruct}
{ HW Version } : {2017}
{ Model Checker } : 1
{ Export Profile } : {}
{ Input Files } : {C:\demos\buckling1.fem}
{ Output Directory } : {c:\temp5}
```

End : 2

Step 5: Exit a session.

1. From the **File** menu, select **Exit**.

This closes HVVH.